



Stellah W Mathe
Mercy Emerging Leaders Fellowship.
13/7/2023

Stellah Mathe is a sponsorship officer at Mukuru Promotion Centre in Mukuru slums, one of the largest informal settlements in Nairobi, Kenya., that supports needy children in accessing quality education.

She Pursued International Relations at the University of Nairobi, motivated by the humanitarian cause of the United Nations and its work in promoting social justice to empower the poor and marginalized.

She is passionate about education and believes that every child deserves a chance to learn and thrive.

As a cohort 2 Fellow, Stellah is grateful for the opportunity to learn from other inspiring women leaders and mentor, who have helped her grow personally and professionally.

She has witnessed how hunger and malnutrition affect the attendance, performance, and well-being of the students in the schools that MPC supports. That is why she decided to do a project on the impact of food for education program on education, hoping to find evidence-based solutions that can enhance the quality and access of education for the children in Mukuru slums. She hopes that her project will inspire more sponsors and donors to support MPC's mission and vision.

Influence of Food for Education Programs on Needy Children in Public Primary Schools within Mukuru Slums, Nairobi

Stellah W Mathe
Mercy Global Action Emerging
Leaders Fellowship

13/7/2023



They had a good life in the countryside.....



But then things changed. The government decided to build a dam on the river that irrigated their land.....



Tragedy struck
when the dam burst



Deaths and displacement, homelessness







*Moved to
Mukuru
slums...*

❑ **Located
in
Nairobi.**

- **Over
700,000
people.**



polluted river...



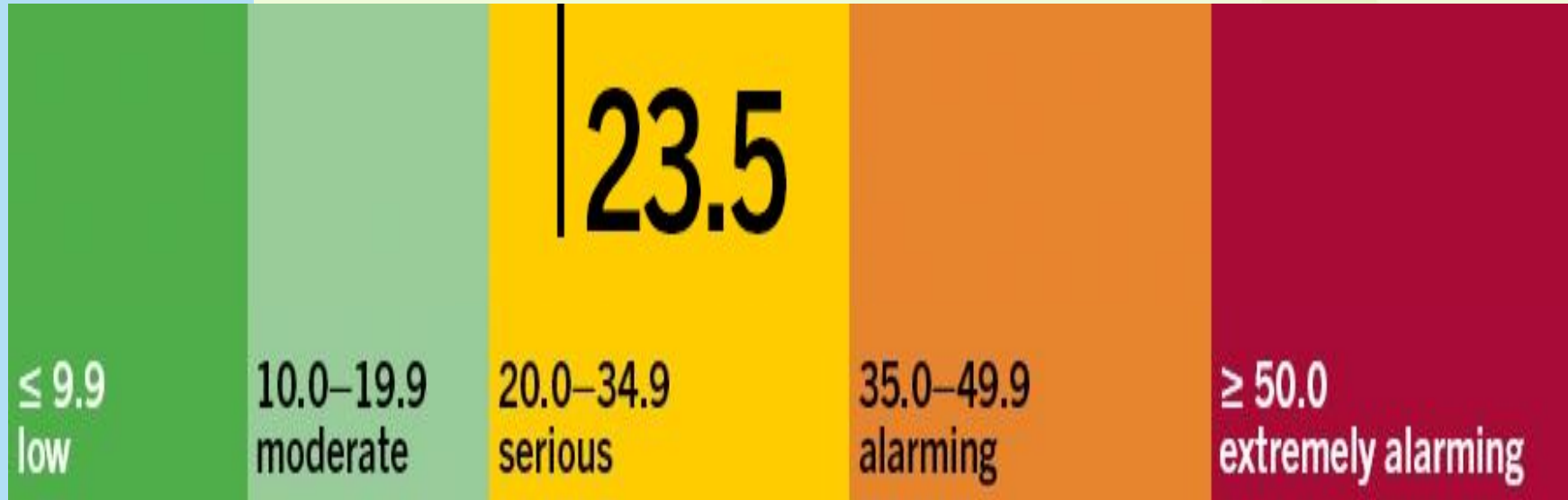
Scavenging on
dump sites to
get our daily
bread....



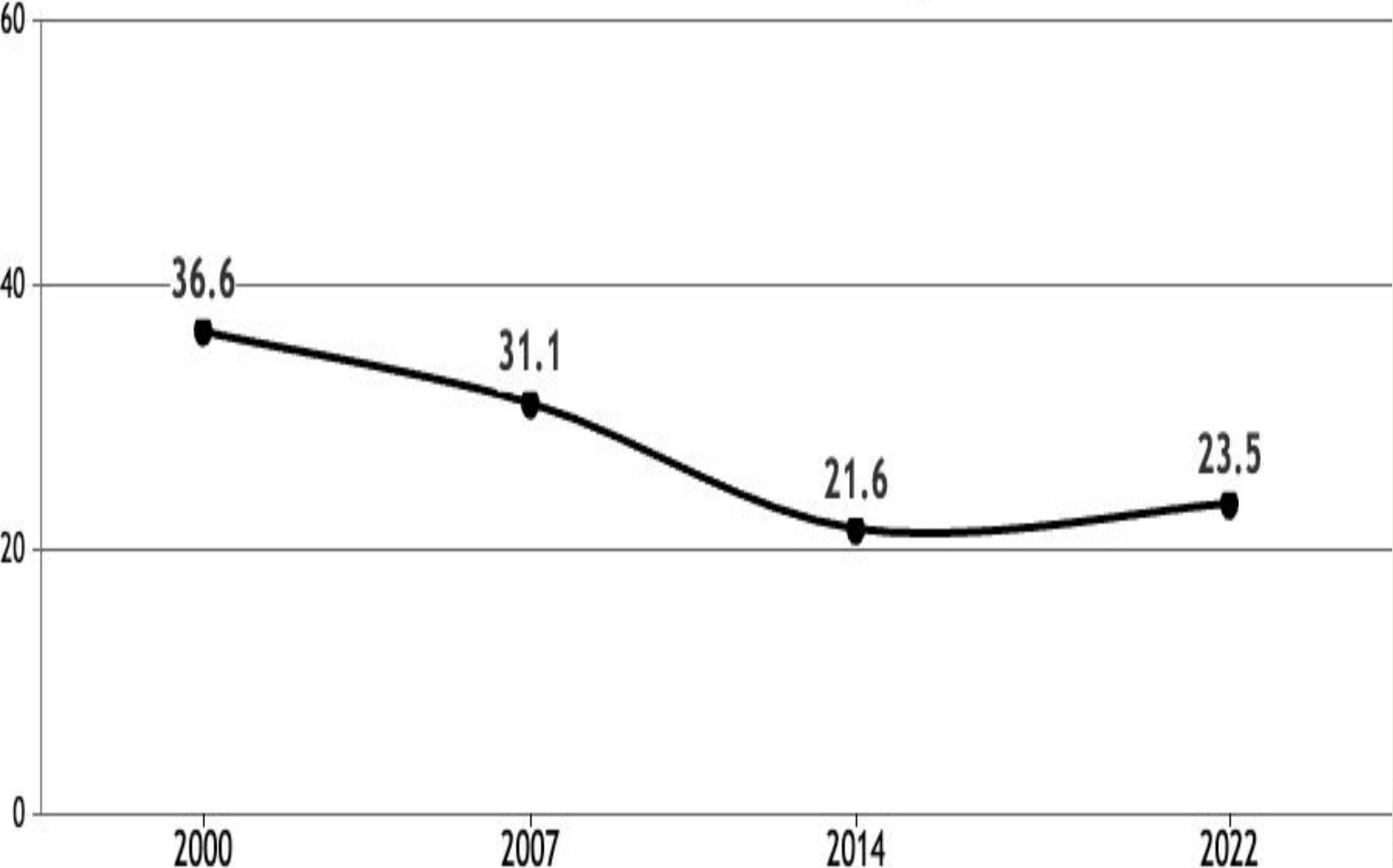
Do you now believe that child hunger is fundamentally a political problem in Kenya? 😞



In the 2022 Global Hunger Index, Kenya has a score of **23.5**, Kenya has a level of hunger that is *serious*. Families headed by women are more likely to be food insecure than those headed by men.



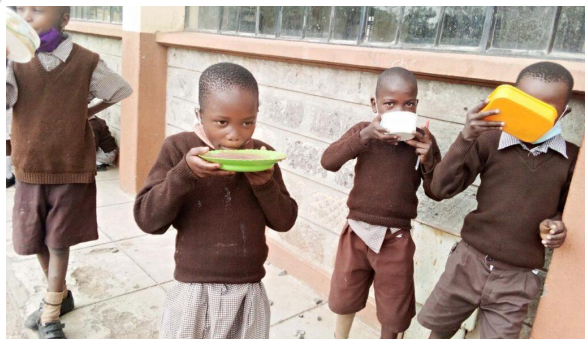
GHI Score Trend for Kenya



FOOD FOR EDUCATION AND SDGs

- Food for Education Program as a social safety net is an instrument for achieving the Sustainable Development Goals (SDG's).





*MPC is Feeding
over 7013
primary school
children through
food for
education
program.*



MPC Food For Education program



Impact of Food for Education



Influence of FFE program on enrolment

Children response on what motivates them to school Influence	Frequency	%
School feeding program	160	80.0
Conducive environment	20	10.0
Extra-curricular activities	22	10.0
Total	200	100.0

Influence of FFE program on school attendance

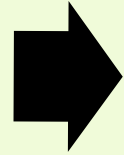
Other factors influencing attendance	Frequency	%
Hunger	28	70.0
Long distance walk	8	20.0
Insecurity	1	2.5
Lack of motivation	3	7.5
Total	40	100.0

Influence of FFE on enrolment in MPC schools

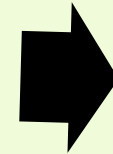
SCHOOL	Yr. 2023	Yr. 2022	Yr. 2021	Yr. 2020
Mukuru Kayaba	1,640	1,666	1,267	1,733
St Bakhita Mukuru	1,062	1,083	1,107	972
St Elizabeth Mukuru	2,017	1,803	1,810	1,885
St Catherine's Mukuru	1,305	1,285	1,632	1,211
TOTAL	6,024	5,837	5,816	5,801

Findings of Impact on FFE

Food for
Education
Programme
in public
primary
schools.



Enrolment
Attendance
Involvement
in learning
activities



Increased
interaction
Increased
shared
responsibility
Increased
choice making
in activities



Limitations & Solutions

Challenge

Solution

Delivery of meals

Transportation of food items, as well as adequate at the schools.

Storage facilities

Need for a storage facility with a cooler for the preservation of perishables.

Inadequate resources

Seek more support from the government, donors, partners, and communities for the sustainability of the program.

Food insecurity

Diversify food sources, use locally produced and nutritious foods, and adopt climate-smart agricultural practices.

Conclusion

- **Education is a key to empowerment and transformation for the poor people of Mukuru slums.**
- **MPC is living out the Mercy charism by responding to the needs of the time with compassion, justice and service to the poor and uneducated in advocating for zero hunger and education .**
- **Providing quality education to over 13,000 children and youth.**



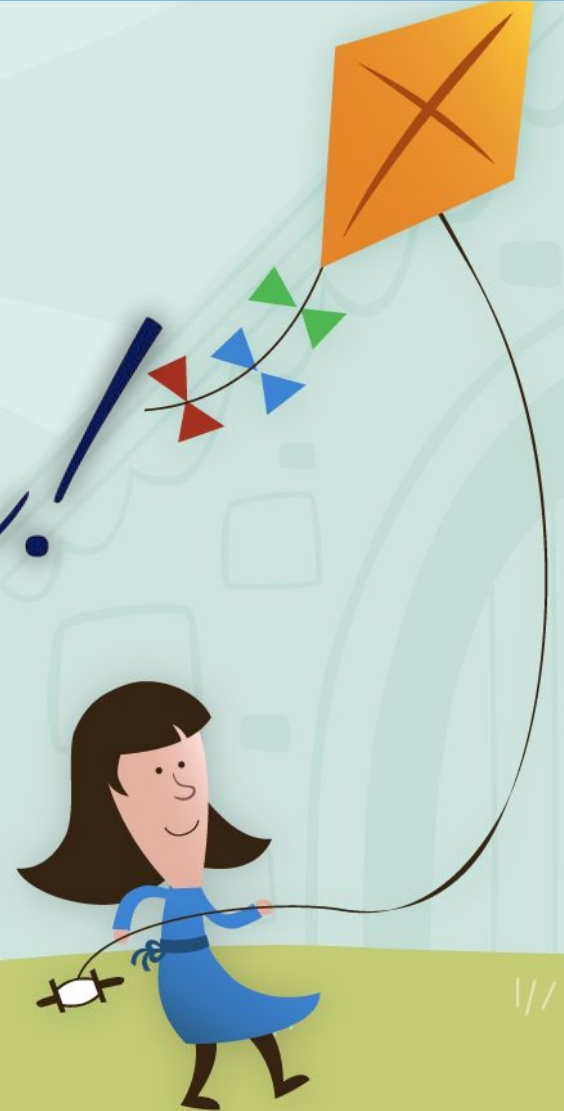
Recommendations:

- **All Kenyan children deserve access to nutritious meals and none of them should learn on an empty stomach.**
- **A call on the government to see that policies are formulated and implemented by maintaining financial sustainability which is crucial for a successful FFE.**
- **To make food for education programs mandatory and accessible to all public primary schools.**
- **A need to collaborate with other global partners who share the same vision and values of expanding social protection advocacy through improving FFE guidelines, inspired by the Mercy charism.**



“It is better to build strong children than to repair broken adults.”

Thank You!



Any Questions?