

# The Impact of Teenage Pregnancies on Girls' Education in Mercy Schools in Mukuru Slums





# Agenda

Mercy Global Action Emerging Leaders Fellowship  
Research Presentation

INTRODUCTION  
and BACKGROUND

---

RESEARCH  
QUESTIONS &  
OBJECTIVES

---

METHODOLOGY

---

CAUSES

---

FINDINGS

---

LIMITATION

---

CASE EXAMPLE

---

INTERVENTIONS

---

# Mukuru Slums, Nairobi Kenya

30 Villages

- 700,000 people
- Land area 16 sq kms
- MPC established in 1985
- Majority of unskilled labourers
- Schools among other institutions



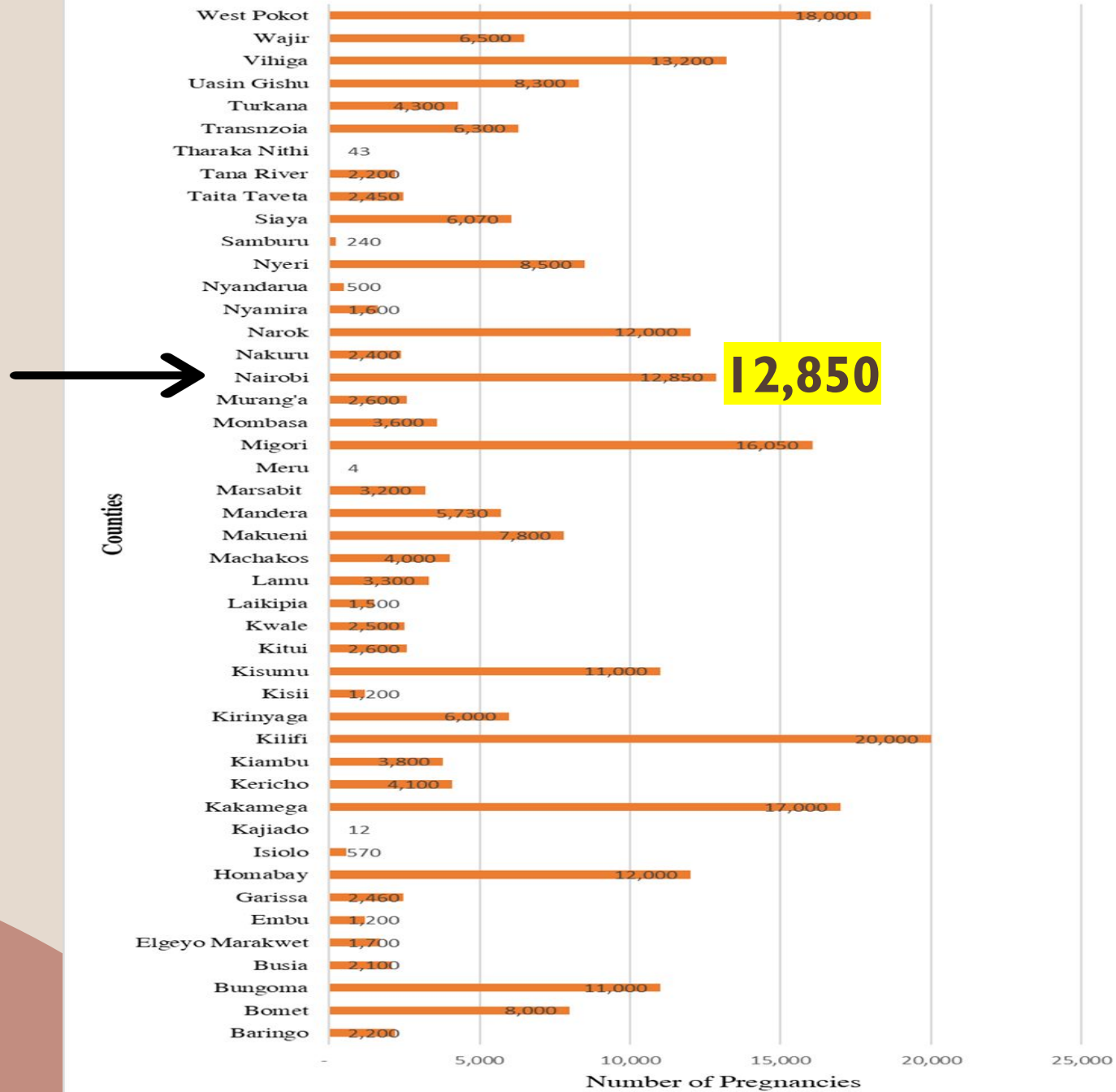
# What is the problem? - Teenage pregnancy

- Teenage pregnancy is classified as occurring in girls within the age of 13-19 year old, (UNICEF).

# Teenage pregnancy

- **262,679** pregnancies cases reported across the 47 Counties in Kenya during Covid19 within March-June 2020 (The African Institute of Development Policy (AFIDEP 2020))
- Nairobi County had **12,850** pregnancy cases

### Impregnated School Girls From March to June 2020 Per County



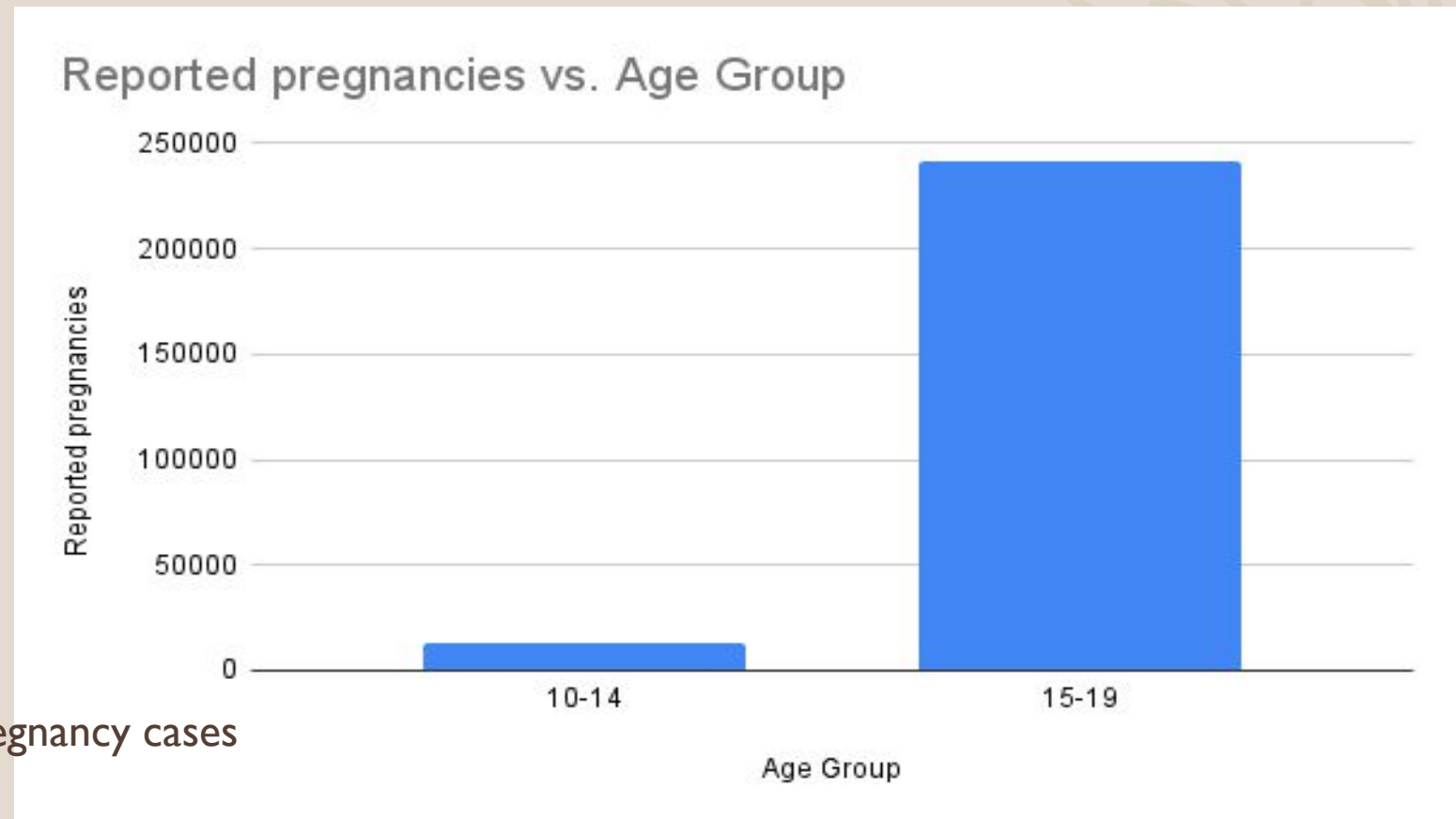
# Total Teenage Pregnancies in 2023

National Syndetic Disease Control Council, (NSDCC 2023) Report  
254,723 teenage pregnancies

12,966 [10 – 14yrs]

241,787 [15 – 19yrs]

- Nairobi County had 11,795 pregnancy cases



# United Nations Population Fund (UNFPA) Statistics 2018

- A (UNFPA) report in Kenya showed 378,397 adolescent and teenage pregnancies for girls ages 10-19 between July 2016 and June 2018.
- 28,932 girls ages 10-14 and
- 349,465 girls ages 15-19.





# Ministry of Health Statistics



Ministry of Health LAUNCHED

## “End the Triple Threat Commitment Plan”

to address teenage pregnancies, new HIV infections and gender-based violence (GVB) by 2027 (The Star)

Involve stakeholders (e.g. judiciary), involve men and boys, launch campaigns



## Dr Amina Mohamed former Minister for Education

“Kenya must confront the worrying trend of teenage pregnancies.....We must have this conversation. We cannot bury our heads in the sand. It is happening to our children, our sisters....”

Amina Mohamed CS Education, Kenya 2018.

Citizen Television 10 December 2018

# Mercy Schools in Mukuru Slums



- MPC: **107** cases since 2020 to June 2024;
- Reuben Health Centre delivered **186** newborns (2018-2023)
- Other cases not recorded



# Methodology

A population of 107 girls

A sample of 20 girls (13-19 years) interviewed out of 107 pregnancy cases reported between January 2020 and June 2024

**-Individual interviews and group discussion...**girls were more open to discussion with the interviewer

**-Group discussion**

**Parents / Guardian meeting...**one meeting held for secondary school



# Root Causes



- Poverty
- Vulnerable-exposure
- Engage in “transactional” sex to meet basic needs

# Root Causes

- Living Conditions



Fire outbreaks



Joblessness/Idleness



Illicit Brewing



Close proximity

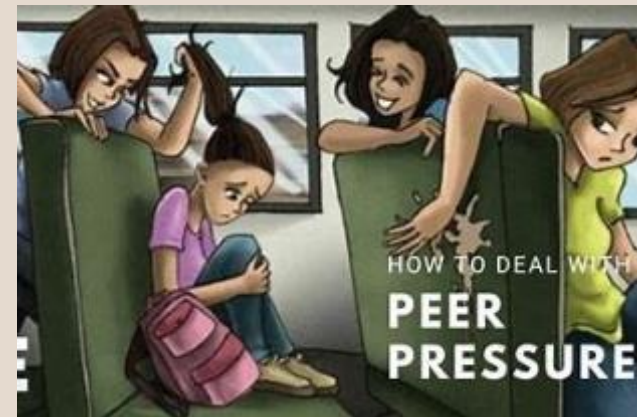
# Root Causes

Inadequate sex education

- Life skills syllabus (KNEC)

Peer Pressure/ Influence

Coupling





# Root Causes

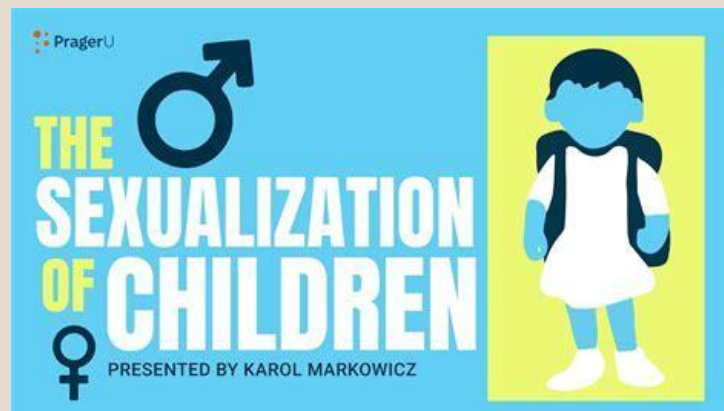
Family dynamics

“absent parents” or a lack of parental guidance

Early Sexualization exposure

-Space

-Pornography



# Impact on Education

## Concentration Issues

- Hormonal changes
- Medical appointments
- Mood swings
- Interruptions from school
- Depression
- Stress and anxiety due to loss of class time
- Poor/ reduced performance



## Human Wellbeing Issues

- Social stigma
- Health issues
- Psychological & Physiological changes
- Financial stability
- Overwhelmed and drop out

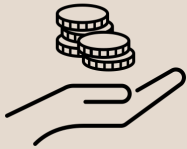
# Findings

## Academic Achievement



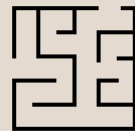
50% Returned  
50% Left

## Social Context



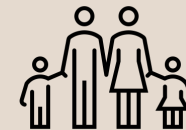
80% live in extreme poverty,

## Psychological Context

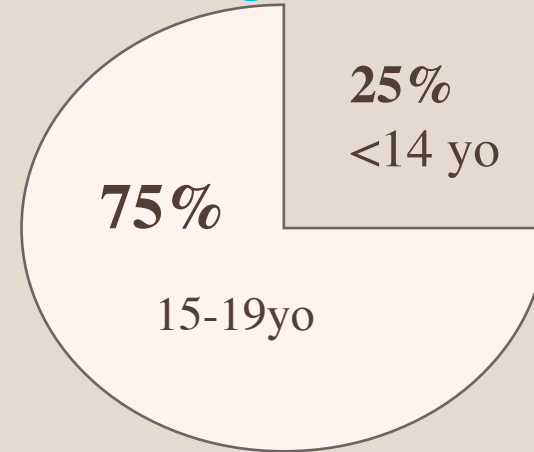


Stigma and Discrimination 100%

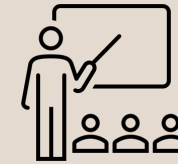
Supports < 50%



## Targets



## Prevalence of Cases



80% Secondary  
20% Primary

**Tam**



**16 years old**

**Pam**



**17 years old**

# Intervention Programs

- ✓ Comprehensive, culturally accepted sexual education
  - Engage other stakeholders to develop topics under sex education
  - Train teachers and social workers
  - Parental involvement



# Intervention Programs

- ✓ **Counselling, mentorship and support services**
  - Strengthen the counselling department
  - Peer support groups
  - Connect boys and girls with role models



# Intervention Programs

- ✓ **Community engagement and awareness**
  - Target community leader
  - Parents/guardian empowerment training sessions



# Intervention Programs

- ✓ **Financial support**
  - Back to school
  - Bursaries/scholarships, school supplies
  - Day care support





# Intervention Programs

## ✓ Policy Advocacy

- Child Protection Unit
- Meet leaders/authority for follow-up on ongoing and new court cases



# Limitation of the Study



- ✓ Research only associated with Mercy schools under Mukuru Promotion Centre.
- ✓ Need for further study to identify the actual number
- ✓ Further study to identify sex education/interventions/programs by other projects in other slums
- ✓ Life skills syllabus

Asante Sana  
Thank you



Dinah Mwendwa  
Mukuru Promotion Centre  
Assistant Director  
[Dinahm@mercymukuru.co.ke](mailto:Dinahm@mercymukuru.co.ke)  
[www.mercymukuru.co.ke](http://www.mercymukuru.co.ke)



2024  
*Research Presentations*

**MERCY GLOBAL ACTION  
EMERGING LEADERS FELLOWSHIP  
RESEARCH PRESENTATIONS**

July 10th & 11th, 2024

*Mercy International Association  
Extending Mercy Women's Sphere of Influence  
Group Three - 2023-2024*

**Thank you for joining  
us and supporting  
the MELF Fellows.**

**Please join us for the  
remainder of  
presentations  
tomorrow, 11 July at  
10:45am Dublin time  
(please check your  
local time)**